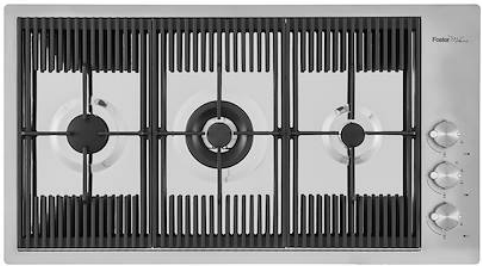


# Cooker hob Milanello

Gas hobs

Code: 7680 000



## DETAILS

Edge/Installation Type	Flush-mount   Top-mount
Material	AISI 304 stainless steel
Texture	Brushed in line
Supply	220 - 240 V; 50/60 Hz
Dimensions	870x476 mm
Base size	90cm
Heating element	three burners
Built-in hole	View technical data sheet
Grids	Cast iron grids and enamelled burner covers

Width	87 cm
-------	-------

Total power	7.750 W
-------------	---------

Auxiliary	1.000 W
-----------	---------

Semirapid	1.750 W
-----------	---------

Dual	5.000 W
------	---------

Safety	Safety valve with quick-acting thermocouple
--------	---

Ignition	Electric ignition under knob
----------	------------------------------

Gas type	Tested for installation with natural gas, LPG nozzle set included.
----------	--

Type	Gas Hob
------	---------

## FEATURES

Aeo burners	The AEO burners guarantee up to 25% energy saving compared to standard burners. All models are designed with The Dual burner with 2 independent crowns, controlled by a single knob, delivers from 1 to 5KW, a power that can only be found in professional models.
-------------	---

Cast iron grids	Cast-iron is the ideal material for an hob grid, this due to the manifold properties characterising it: high heat capacity that improves cooking performance; high weight and stability that improve safety; sturdiness that preserves the hob's original aspect over time; easy cleaning.
-----------------	--

Safe cooking	All Foster cooker hobs are equipped with safety valves. They shut off the gas supply very quickly if the flame accidentally goes out.
--------------	---

## Special burners

Many Foster hobs are equipped with special burners, with two or three rings of fire that greatly increase the power delivered and the heated surface. In the DUAL models the two fire crowns also have independent ignition, making these burners perfect for both intensive and delicate cooking.

---

## Ultra-flat hob

Design meets functionality in the the ultra-flat models. Elegant grids that form a generously sized overall surface.

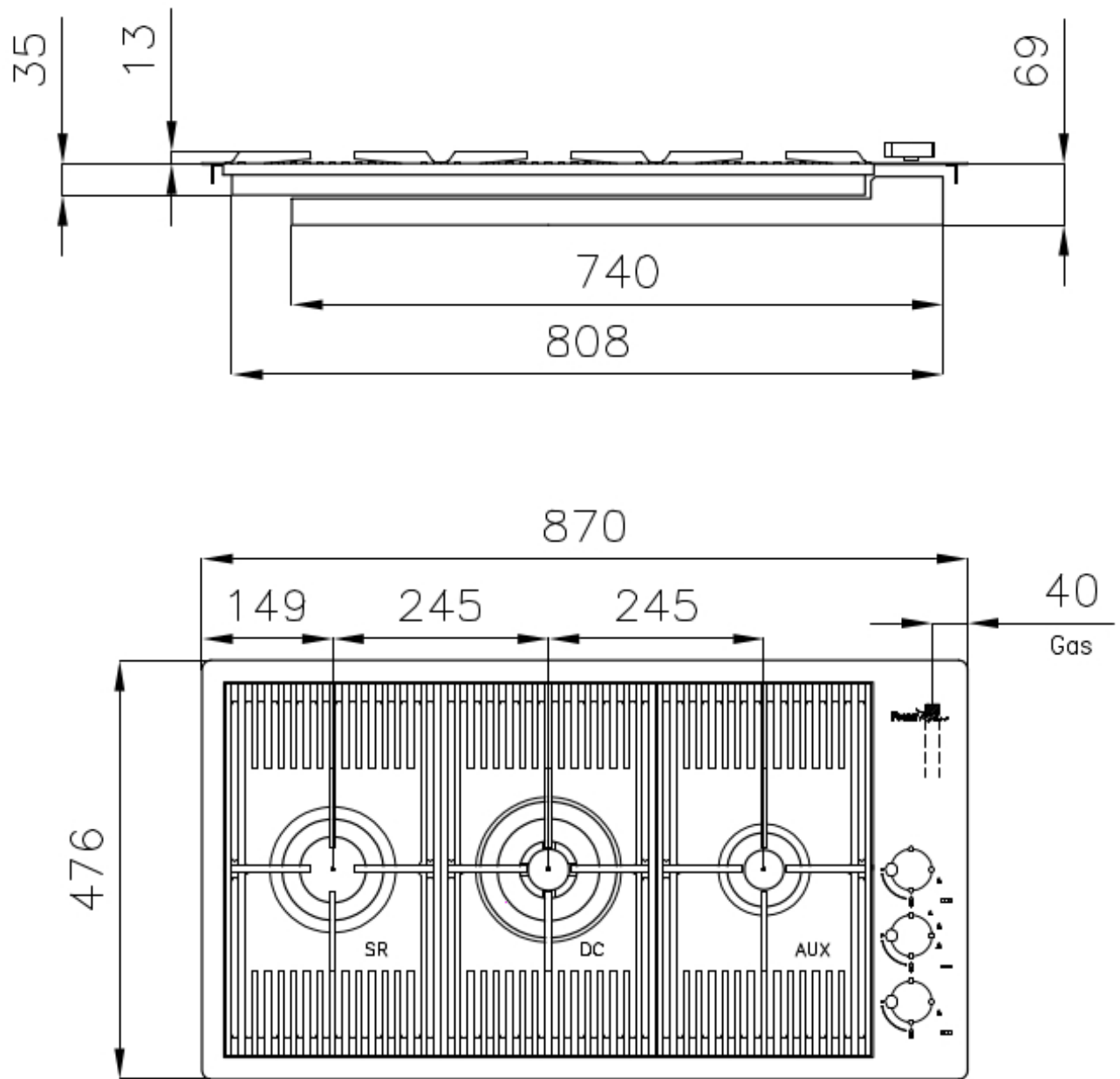
---

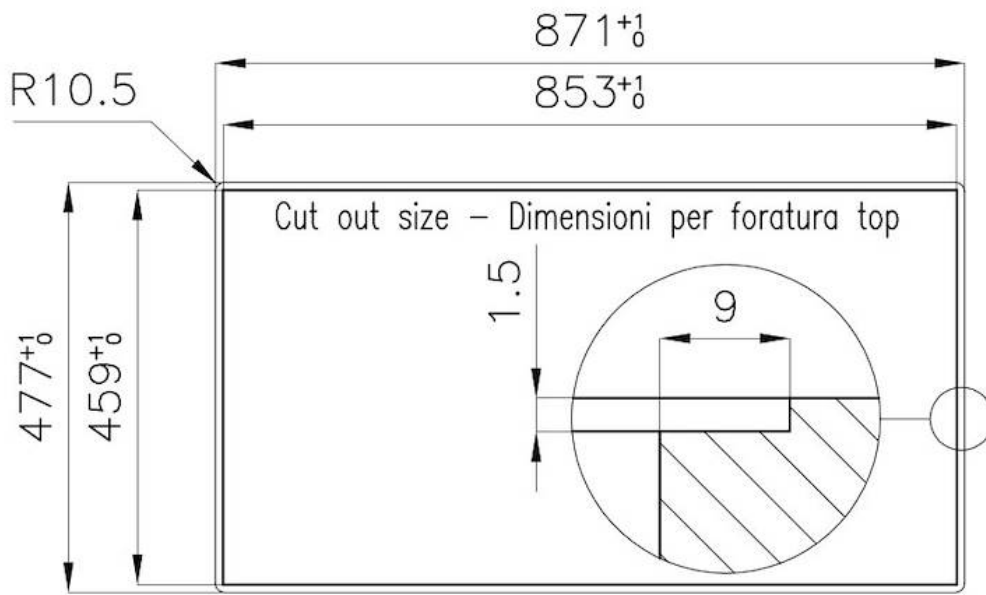
## Under-knob ignition

The utmost freedom of movement with electronic under-knob ignition, a common feature of all models that allows a one-hand ignition of the burner.

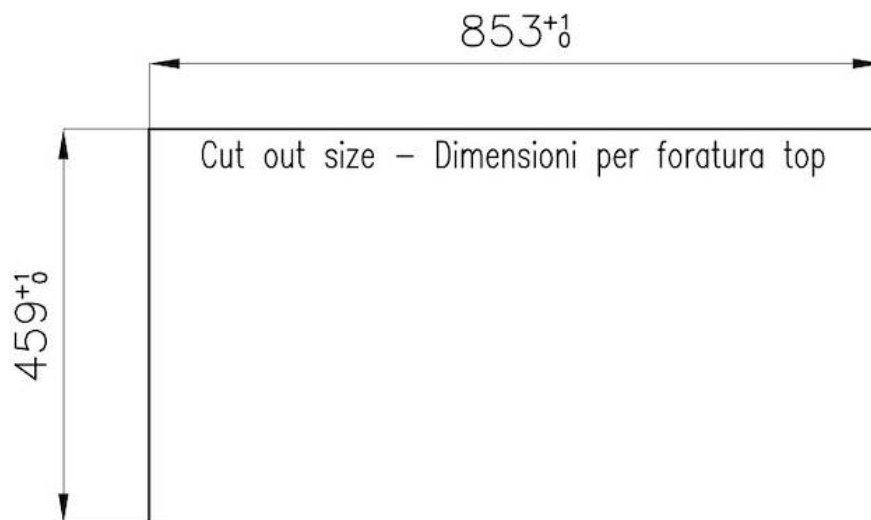
---

## TECHNICAL DATA



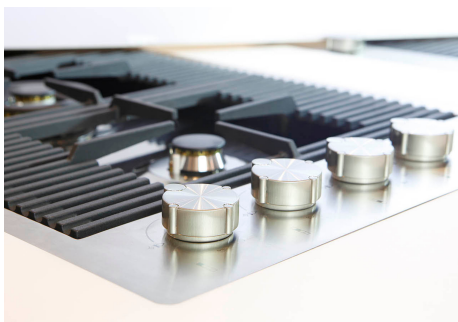


**FT**



**FTS**

## GALLERY



## OPTIONAL ACCESSORIES



**Cast iron wok support**  
9601 727

## RECOMMENDED PAIRINGS



**Hood Ghost 90 Filotop**  
2451 090



**Sink Milanello workstation**  
1034 050